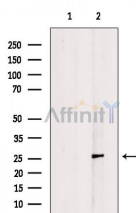


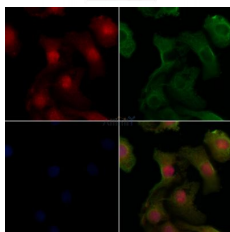
Caveolin 2 Ab

[Images\(5\)](#)

Cat.#: AF5409	Concn.: ~1mg/ml	Mol.Wt.: 27kDa,25kDa
Size:	Source: Rabbit	Clonality: Polyclonal
Application:	IF/ICC 1:100-1:500, WB 1:500-1:2000 *The optimal dilutions should be determined by the end user.	
Reactivity:	Human,Mouse,Rat,Monkey	
Storage:	Rabbit IgG in phosphate buffered saline , pH 7.4, 150mM NaCl, 0.02% sodium azide and 50% glycerol. Store at -20 °C. Stable for 12 months from date of receipt.	
Purification:	The antiserum was purified by peptide affinity chromatography using SulfoLink™ Coupling Resin (Thermo Fisher Scientific).	
Immunogen:	A synthesized peptide derived from human Caveolin 2, corresponding to a region within N-terminal amino acids.	
Uniprot:	P51636	
Description:	May act as a scaffolding protein within caveolar membranes. Interacts directly with G-protein alpha subunits and can functionally regulate their activity. Acts as an accessory protein in conjunction with CAV1 in targeting to lipid rafts and driving caveolae formation.	



Western blot analysis of extracts from COS-7 cells (uv treatment), using Caveolin 2 Ab. The lane on the left was treated with blocking peptide.



AF5409 staining HeLa cells by IF/ICC. The samples were fixed with PFA and permeabilized in 0.1% Triton X-100, then blocked in 10% serum for 45 minutes at 25°C. Samples were then incubated with primary Ab (#AF5409) and mouse anti-beta tubulin Ab (#T0023) for 1 hour at 37°C. An AlexaFluor594 conjugated goat anti-rabbit IgG Ab (Red) and an AlexaFluor488 conjugated goat anti-mouse IgG Ab (Green) were used as the secondary Ab. The nuclear counter stain is DAPI (blue).

IMPORTANT: For western blot, incubate membrane with diluted primary Ab in 5% w/v milk, 1X TBS, 0.1% Tween@20 at 4°C with gentle shaking, overnight.



Affinity Biosciences

website: www.affbiotech.com

order: order@affbiotech.com

For Research Use Only. Not for use in diagnostic and therapeutic procedures. Not for resale without express authorization.