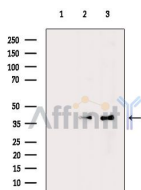


## CrkL Ab

[References\(2\)](#) [Images\(6\)](#)

|               |                 |                       |
|---------------|-----------------|-----------------------|
| Cat.#: AF7805 | Concn.: ~1mg/ml | Mol.Wt.: 39kDa        |
| Size:         | Source: Rabbit  | Clonality: Polyclonal |

|               |  |
|---------------|--|
| Application:  | WB 1:500-1:2000<br>*The optimal dilutions should be determined by the end user.  |
| Reactivity:   | Human,Mouse,Rat,Monkey   |
| Storage:      | Rabbit IgG in phosphate buffered saline , pH 7.4, 150mM NaCl, 0.02% sodium azide and 50% glycerol. Store at -20 °C. Stable for 12 months from date of receipt. |
| Purification: | The antiserum was purified by peptide affinity chromatography using SulfoLink™ Coupling Resin (Thermo Fisher Scientific).                                      |
| Immunogen:    | A synthesized peptide derived from human CrkL, corresponding to a region within the internal amino acids.  |
| Uniprot:      | P46109   |



Western blot analysis of extracts from various samples, using CrkL Ab.  
Lane 1: Mouse spleen, blocked with antigen-specific peptides.  
Lane 2: Mouse spleen.  
Lane 3: Mcf7 cells(heat-shock treatment).

**IMPORTANT:** For western blot, incubate membrane with diluted primary Ab in 5% w/v milk , 1X TBS, 0.1% Tween@20 at 4°C with gentle shaking, overnight.

For Research Use Only. Not for use in diagnostic and therapeutic procedures. Not for resale without express authorization.