

Phospho-Synuclein alpha (Ser129) Ab

[Images\(18\)](#)

Cat.#: AF3285
 Size: 100ul,200ul,50ul

Concn.: ~1mg/ml
 Source: Rabbit

Mol.Wt.: 18kDa
 Clonality: Polyclonal

Application: WB 1:500-1:2000, IHC 1:50-1:200, IF/ICC 1:100-1:500, ELISA(peptide) 1:20000-1:40000
 *The optimal dilutions should be determined by the end user.

Reactivity: Human,Mouse,Rat

Purification: The Ab is from purified rabbit serum by affinity purification via sequential chromatography on phospho-peptide and non-phospho-peptide affinity columns.

Immunogen: A synthesized peptide derived from human Synuclein alpha around the phosphorylation site of Ser129.

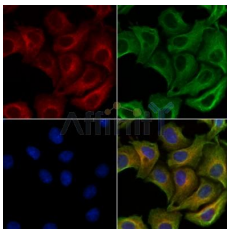
Uniprot: P37840

Description: Alpha-synuclein is a member of the synuclein family, which also includes beta- and gamma-synuclein. Synucleins are abundantly expressed in the brain and alpha- and beta-synuclein inhibit phospholipase D2 selectively.

Storage: Rabbit IgG in phosphate buffered saline , pH 7.4, 150mM NaCl, 0.02% sodium azide and 50% glycerol. Store at -20 °C. Stable for 12 months from date of receipt.



AF3285 at 1/100 staining Mouse brain tissue by IHC-P. The sample was formaldehyde fixed and a heat mediated antigen retrieval step in citrate buffer was performed. The sample was then blocked and incubated with the primary Ab at 4°C overnight. An HRP conjugated anti-Rabbit Ab was used as the secondary Ab.



AF3285 staining H2O2 treated Hela cells by IF/ICC. The samples were fixed with PFA and permeabilized in 0.1% Triton X-100, then blocked in 10% serum for 45 minutes at 25°C. Samples were then incubated with primary Ab(AF3285) and mouse anti-beta tubulin Ab(T0023) for 1 hour at 37°C. An AlexaFluor594 conjugated goat anti-rabbit IgG(H+L) Ab(Red) and an AlexaFluor488 conjugated goat anti-mouse IgG(H+L) Ab(Green) were used as the secondary Ab. The nuclear counter stain is DAPI(blue).

IMPORTANT: For western blot, incubate membrane with diluted primary Ab in 5% w/v milk , 1X TBS, 0.1% Tween@20 at 4°C with gentle shaking,



Affinity Biosciences
website: www.affbiotech.com
order: order@affbiotech.com

overnight.

For Research Use Only. Not for use in diagnostic and therapeutic procedures. Not for resale without express authorization.