

## Phospho-Tau (Ser199) Ab

[Images\(3\)](#)

|                   |                 |                       |
|-------------------|-----------------|-----------------------|
| Cat.#: AF2418     | Concn.: ~1mg/ml | Mol.Wt.: 50-80kDa     |
| Size: 100ul,200ul | Source: Rabbit  | Clonality: Polyclonal |

**Application:** WB 1:500-1:2000, IHC 1:50-1:200  
 \*The optimal dilutions should be determined by the end user.

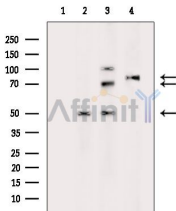
**Reactivity:** Human,Mouse,Rat

**Purification:** The Ab is from purified rabbit serum by affinity purification via sequential chromatography on phospho-peptide and non-phospho-peptide affinity columns.

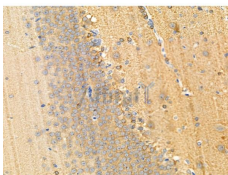
**Immunogen:** A synthesized peptide derived from human Tau around the phosphorylation site of Ser199.

**Uniprot:** P10636

**Storage:** Rabbit IgG in phosphate buffered saline , pH 7.4, 150mM NaCl, 0.02% sodium azide and 50% glycerol. Store at -20 °C. Stable for 12 months from date of receipt.



Western blot analysis of extracts from 3T3-L1 cells(heat-shock treatment)HepG2 cells(heat-shock treatment) Hela cells(heat-shock treatment), using Phospho-Tau (Ser199)[Ser516] Ab. The lane on the left was treated with blocking peptide.



AF2418 at 1/100 staining Rat brain tissue by IHC-P. The sample was formaldehyde fixed and a heat mediated antigen retrieval step in citrate buffer was performed. The sample was then blocked and incubated with the primary Ab at 4°C overnight. An HRP conjugated anti-Rabbit Ab was used as the secondary Ab.

**IMPORTANT:** For western blot, incubate membrane with diluted primary Ab in 5% w/v milk , 1X TBS, 0.1% Tween@20 at 4°C with gentle shaking, overnight.

For Research Use Only. Not for use in diagnostic and therapeutic procedures. Not for resale without express authorization.