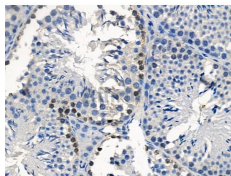


Phospho-Smad7 (Ser249) Ab

[References\(4\)](#) [Images\(3\)](#)

Cat.#: AF3827	Concn.: ~1mg/ml	Mol.Wt.:
Size:	Source: Rabbit	Clonality: Polyclonal

Application:	IHC 1:50-1:200 *The optimal dilutions should be determined by the end user.
Reactivity:	Human,Mouse,Rat
Storage:	Rabbit IgG in phosphate buffered saline , pH 7.4, 150mM NaCl, 0.02% sodium azide and 50% glycerol. Store at -20 °C. Stable for 12 months from date of receipt.
Purification:	The Ab is from purified rabbit serum by affinity purification via sequential chromatography on phospho-peptide and non-phospho-peptide affinity columns.
Immunogen:	A synthesized peptide derived from human Smad7 around the phosphorylation site of Ser249.
Uniprot:	O15105



AF3827 at 1/100 staining Mouse testis tissue by IHC-P. The sample was formaldehyde fixed and a heat mediated antigen retrieval step in citrate buffer was performed. The sample was then blocked and incubated with the primary Ab at 4°C overnight. An HRP conjugated anti-Rabbit Ab was used as the secondary Ab.

For Research Use Only. Not for use in diagnostic and therapeutic procedures. Not for resale without express authorization.