

MPPE1 Ab

[Images\(1\)](#)

Cat.#: DF15972	Concn.: ~1mg/ml	Mol.Wt.:
Size:	Source: Rabbit	Clonality: Polyclonal

Application: IF/ICC 1:100-1:500

*The optimal dilutions should be determined by the end user.

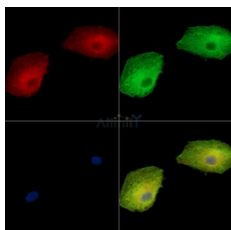
Reactivity: Human,Mouse,Rat

Storage: Rabbit IgG in phosphate buffered saline, pH 7.4, 150mM NaCl, 0.02% sodium azide and 50% glycerol. Store at -20 °C. Stable for 12 months from date of receipt.

Purification: The antiserum was purified by peptide affinity chromatography using SulfoLink™ Coupling Resin (Thermo Fisher Scientific).

Immunogen: A synthesized peptide derived from human MPPE1.

Uniprot: Q53F39



DF15972 staining A549 cells by IF/ICC. The samples were fixed with PFA and permeabilized in 0.1% Triton X-100, then blocked in 10% serum for 45 minutes at 25°C. Samples were then incubated with primary Ab(#DF15972) and mouse anti-beta tubulin Ab(#T0023) for 1 hour at 37°C. An AlexaFluor594 conjugated goat anti-rabbit IgG Ab(Red) and an AlexaFluor488 conjugated goat anti-mouse IgG Ab(Green) were used as the secondary Ab.

The nuclear counter stain is DAPI (blue).

For Research Use Only. Not for use in diagnostic and therapeutic procedures. Not for resale without express authorization.