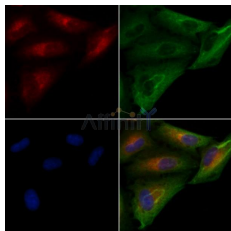


## ATP2A2 Ab

[References\(4\)](#) [Images\(6\)](#)

Cat.#: DF6240	Concn.: ~1mg/ml	Mol.Wt.: 115kDa
Size:	Source: Rabbit	Clonality: Polyclonal
Application:	WB 1:500-1:2000, IHC 1:50-1:200, IF/ICC 1:100-1:500 *The optimal dilutions should be determined by the end user.	
Reactivity:	Human, Mouse, Rat	
Storage:	Rabbit IgG in phosphate buffered saline, pH 7.4, 150mM NaCl, 0.02% sodium azide and 50% glycerol. Store at -20 °C. Stable for 12 months from date of receipt.	
Purification:	The antiserum was purified by peptide affinity chromatography using SulfoLink™ Coupling Resin (Thermo Fisher Scientific).	
Immunogen:	A synthesized peptide derived from human ATP2A2, corresponding to a region within the internal amino acids.	
Uniprot:	P16615	
Description:	The ATP2A2 (SERCA2) calcium pump is one of several sarcoplasmic and endoplasmic reticulum Ca <sup>2+</sup> -ATPases responsible for regulating calcium transport across intracellular membranes. Multiple isoforms have been isolated, with ATP2A2a (SERCA2a) found predominantly in the sarcoplasmic reticulum of muscle cells and ATP2A2b (SERCA2b) more ubiquitously expressed in the endoplasmic reticulum of most cell types. An isoform containing a truncated carboxy region (ATP2A2c) is expressed in epithelial and hematopoietic cell lines and may be involved in monocyte differentiation. Post-translational modification of ATP2A2 (SERCA2), including phosphorylation and tyrosine nitration, modify Ca <sup>2+</sup> -ATPase activity and calcium transport (4,5).	



DF6240 staining A549 cells by IF/ICC. The samples were fixed with PFA and permeabilized in 0.1% Triton X-100, then blocked in 10% serum for 45 minutes at 25°C. Samples were then incubated with primary Ab (DF6240) and mouse anti-beta tubulin Ab (T0023) for 1 hour at 37°C. An AlexaFluor594 conjugated goat anti-rabbit IgG (H+L) Ab (Red) and an AlexaFluor488 conjugated goat anti-mouse IgG (H+L) Ab (Green) were used as the secondary Ab. The nuclear counter stain is DAPI (blue).

**IMPORTANT:** For western blot, incubate membrane with diluted primary Ab in 5% w/v milk, 1X TBS, 0.1% Tween@20 at 4°C with gentle shaking, overnight.

---

procedures. Not for resale without express authorization.