

LCN2 Ab

[References\(6\)](#) [Images\(3\)](#)

Cat.#: DF6816	Concn.: ~1mg/ml	Mol.Wt.: 23kDa
Size: 100ul,200ul,50ul	Source: Rabbit	Clonality: Polyclonal

Application: WB 1:500-1:2000, IHC 1:50-1:200, ELISA(peptide) 1:20000-1:40000
 *The optimal dilutions should be determined by the end user.

Reactivity: Human,Mouse,Rat

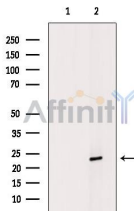
Purification: The antiserum was purified by peptide affinity chromatography using SulfoLink™ Coupling Resin (Thermo Fisher Scientific).

Immunogen: A synthesized peptide derived from human LCN2, corresponding to a region within the internal amino acids.

Uniprot: P80188

Description: Lipocalin-2, a member of the lipocalin family of proteins, was originally identified as a gelatinase-associated component of neutrophil secretory granules . Lipocalin-2 is involved in innate immunity, iron homeostasis, and apoptosis. Lipocalin-2 limits bacterial growth by binding to bacterial siderophores and sequestering iron (2-4). In mammalian cells, iron-loaded lipocalin-2 binds to its receptor, 24p3R, and is internalized, thereby releasing iron and increasing the intracellular iron concentration . Conversely, iron-free lipocalin-2 promotes apoptosis . Lipocalin-2 is also expressed in adipose tissue and promotes insulin resistance in cultured mouse adipocytes .

Storage: Rabbit IgG in phosphate buffered saline , pH 7.4, 150mM NaCl, 0.02% sodium azide and 50% glycerol. Store at -20 °C. Stable for 12 months from date of receipt.



Western blot analysis of extracts from H2O2 treated HepG2 cells, using LCN2 Ab. The lane on the left was treated with blocking peptide.

IMPORTANT: For western blot, incubate membrane with diluted primary Ab in 5% w/v milk , 1X TBS, 0.1% Tween@20 at 4°C with gentle shaking, overnight.