

## Wnt5a Ab

[References\(6\)](#) [Images\(7\)](#)

Cat.#: DF6856	Concn.: ~1mg/ml	Mol.Wt.: 42kDa
Size:	Source: Rabbit	Clonality: Polyclonal

Application: WB 1:500-1:2000, IHC 1:50-1:200  
\*The optimal dilutions should be determined by the end user.

Reactivity: Human, Mouse, Rat

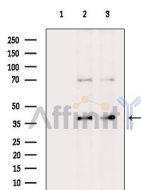
Storage: Rabbit IgG in phosphate buffered saline, pH 7.4, 150mM NaCl, 0.02% sodium azide and 50% glycerol. Store at -20 °C. Stable for 12 months from date of receipt.

Purification: The antiserum was purified by peptide affinity chromatography using SulfoLink™ Coupling Resin (Thermo Fisher Scientific).

Immunogen: A synthesized peptide derived from human Wnt5a, corresponding to a region within the internal amino acids.

Uniprot: P41221

Description: The Wnt family includes several secreted glycoproteins that play important roles in animal development. There are 19 Wnt genes in the human genome that encode functionally distinct Wnt proteins. Wnt members bind to the Frizzled family of seven-pass transmembrane proteins and activate several signaling pathways. The canonical Wnt/β-catenin pathway also requires a coreceptor from the low-density lipoprotein receptor family. Aberrant activation of Wnt signaling pathways is involved in several types of cancers.



Western blot analysis of extracts from various samples, using Wnt5a Ab.  
Lane 1: Hepg2 cells(heat-shock treatment), blocked with antigen-specific peptides.  
Lane 2: Hepg2 cells(heat-shock treatment).  
Lane 3: Hela cells(heat-shock treatment).

**IMPORTANT:** For western blot, incubate membrane with diluted primary Ab in 5% w/v milk, 1X TBS, 0.1% Tween@20 at 4°C with gentle shaking, overnight.

For Research Use Only. Not for use in diagnostic and therapeutic procedures. Not for resale without express authorization.