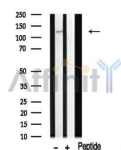


## FIR Ab

[Images\(1\)](#)

Cat.#: AF0527	Concn.: ~1mg/ml	Mol.Wt.: 119kDa
Size:	Source: Rabbit	Clonality: Polyclonal
Application:	WB 1:500-1:2000, IF/ICC 1:100-1:500 *The optimal dilutions should be determined by the end user.	
Reactivity:	Human,Mouse	
Storage:	Rabbit IgG in phosphate buffered saline , pH 7.4, 150mM NaCl, 0.02% sodium azide and 50% glycerol. Store at -20 °C. Stable for 12 months from date of receipt.	
Purification:	The antiserum was purified by peptide affinity chromatography using SulfoLink™ Coupling Resin (Thermo Fisher Scientific).	
Immunogen:	A synthesized peptide derived from human FIR, corresponding to a region within the internal amino acids.	
Uniprot:	O94887	
Description:	Rho-guanine nucleotide exchange factor that activates RAC1. Plays a role in the response to class 3 semaphorins and remodeling of the actin cytoskeleton. Interacts with PLXNA1. Interaction with PLXNA1 or PIP5K1C lowers its guanine nucleotide exchange activity. Dissociates from PLXNA1 when SEMA3A binds to the receptor.Interacts with PIP5K1C via its FERM domain. The interaction with PIP5K1C is enhanced by SEMA3A binding. 2 isoforms of the human protein are produced by alternative splicing.	



Western blot analysis of fir expression in mouse brain lysate

**IMPORTANT:** For western blot, incubate membrane with diluted primary Ab in 5% w/v milk , 1X TBS, 0.1% Tween@20 at 4°C with gentle shaking, overnight.

For Research Use Only. Not for use in diagnostic and therapeutic procedures. Not for resale without express authorization.